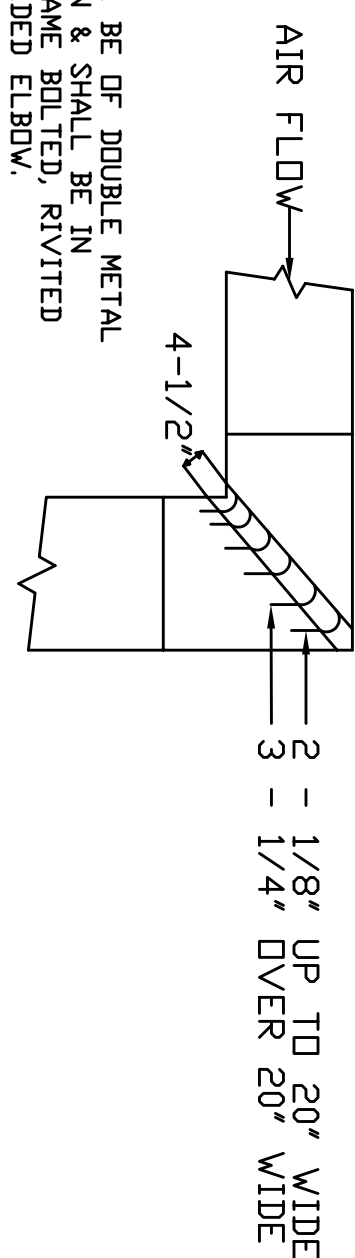
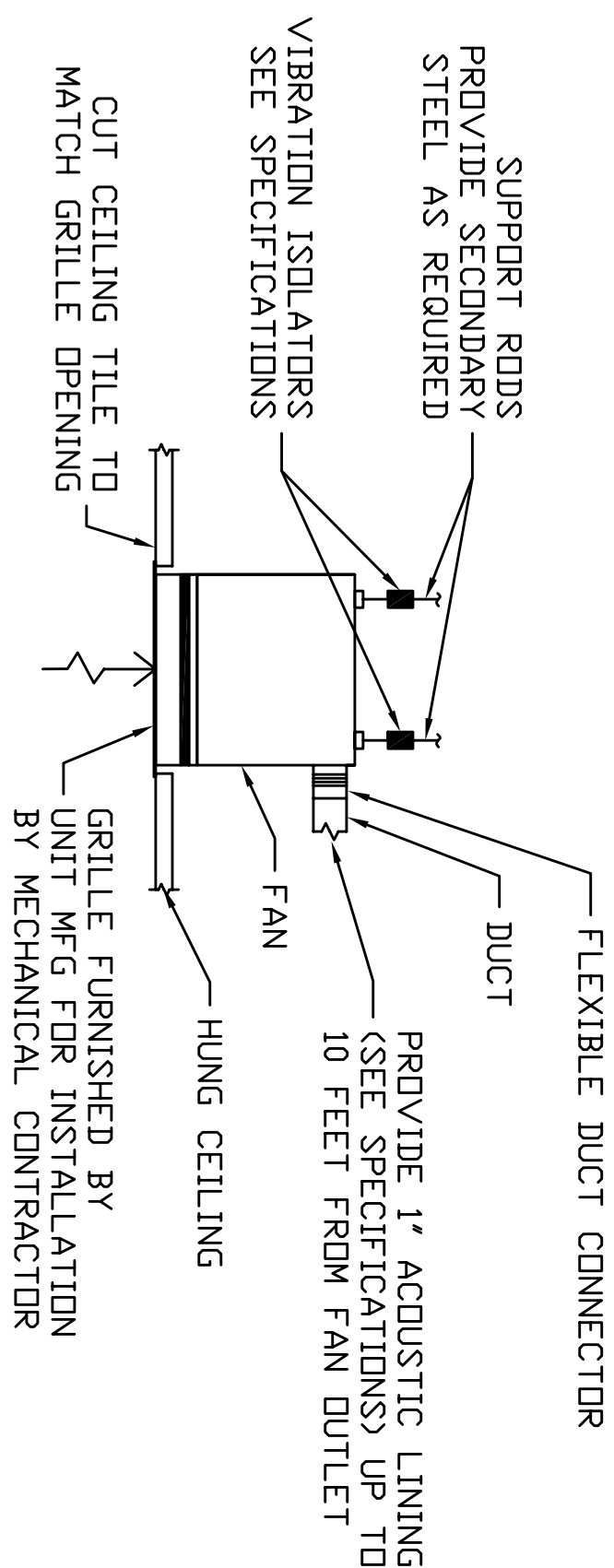


DUCT SIZE	RANGER SIZE	MAX. SPACING
UP TO 25 SQ. FT.	1' x 1/16"	8' - 0"
2 TO 8 SQ. FT.	1' x 1/16"	8' - 0"
OVER 85 SQ. FT.	1' x 1/8"	4' - 0"

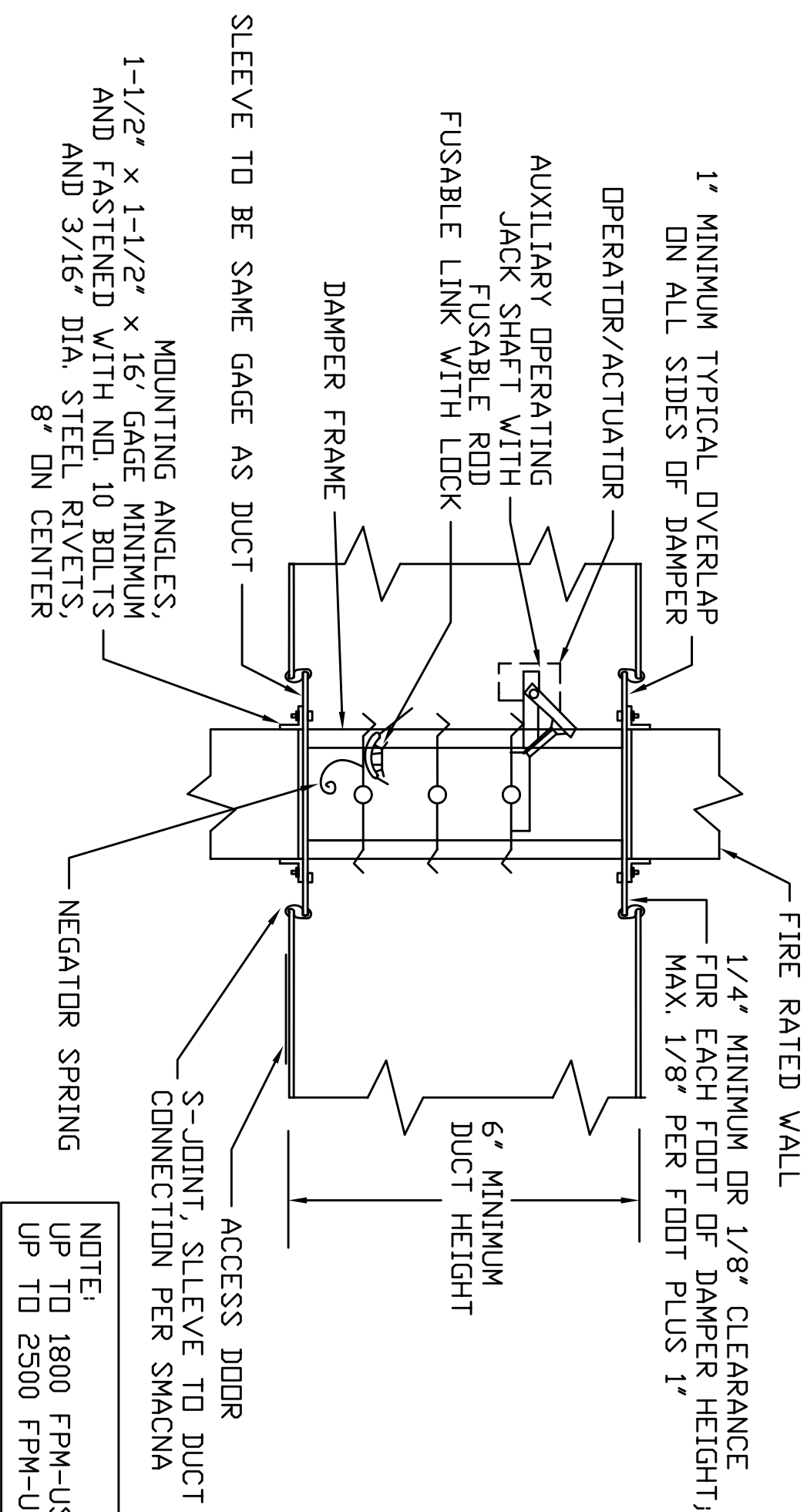
DUCT HANGING DETAIL AND SCHEDULE OF SUPPORTS



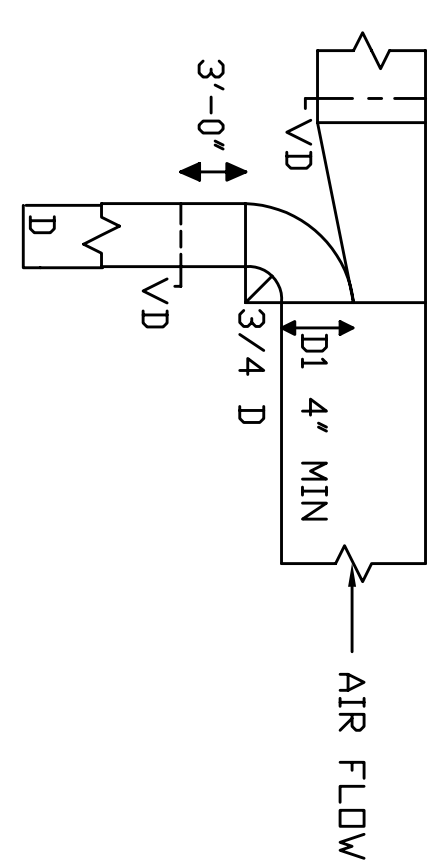
SQUARE ELBOW DETAIL



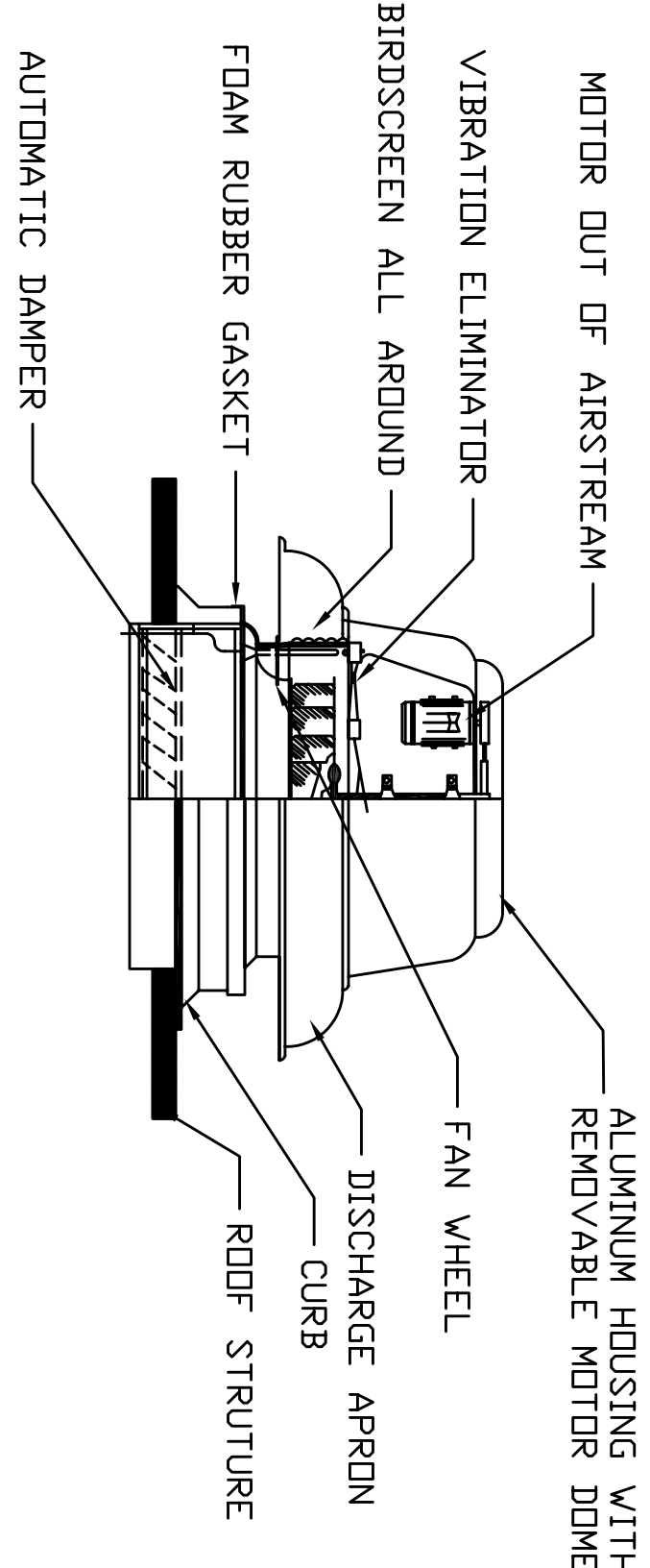
TYPICAL CEILING FAN DETAIL



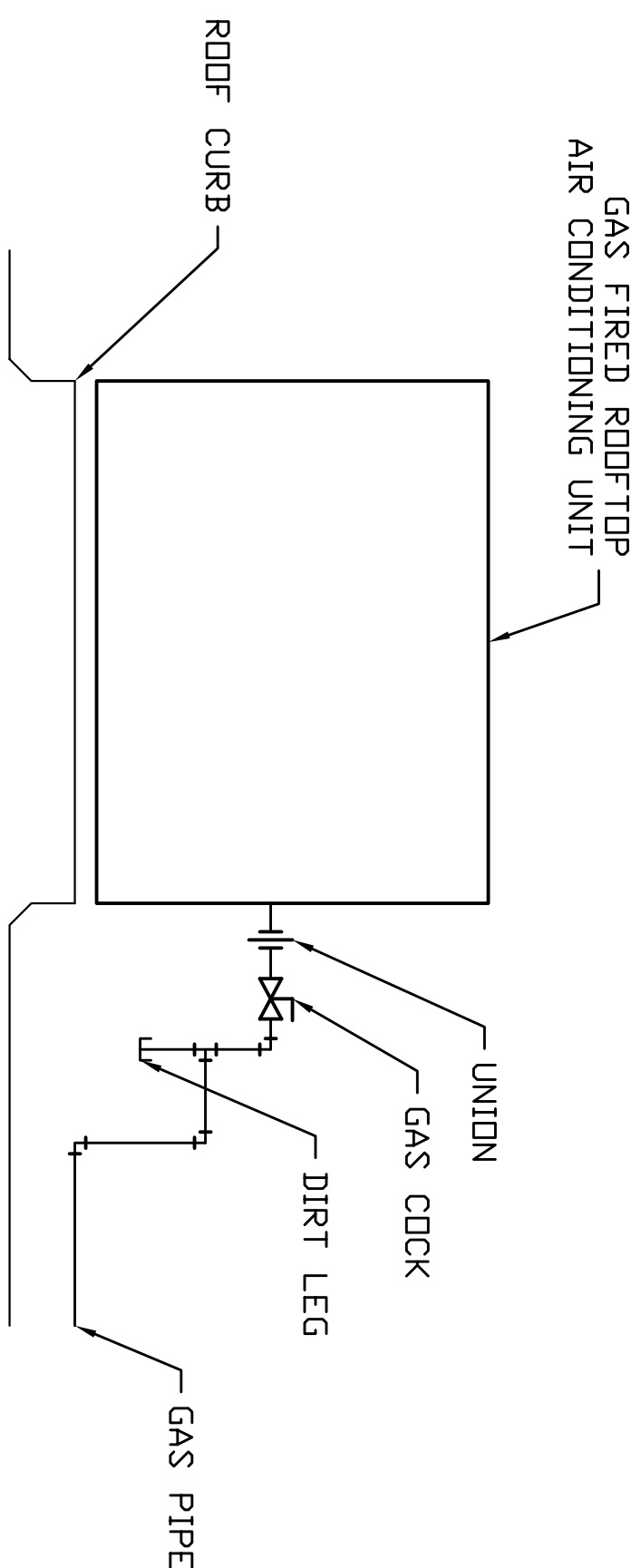
COMBINATION FIRE SMOKE DAMPER DETAIL



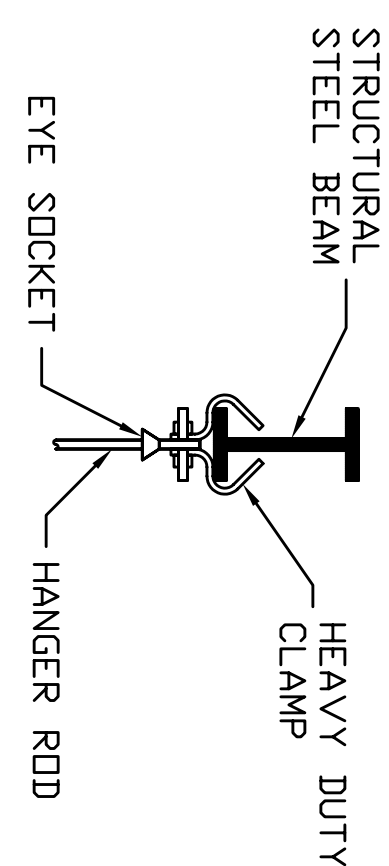
NESTED FITTING DETAIL



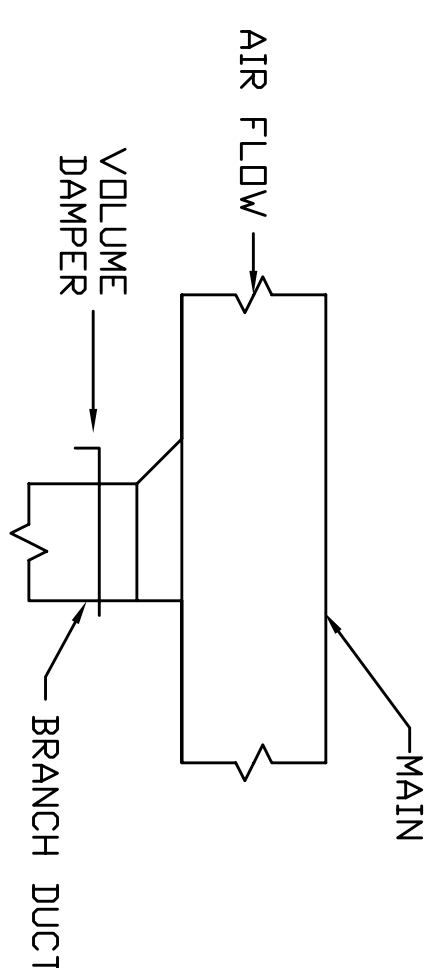
ROOF MOUNTED EXHAUST FAN



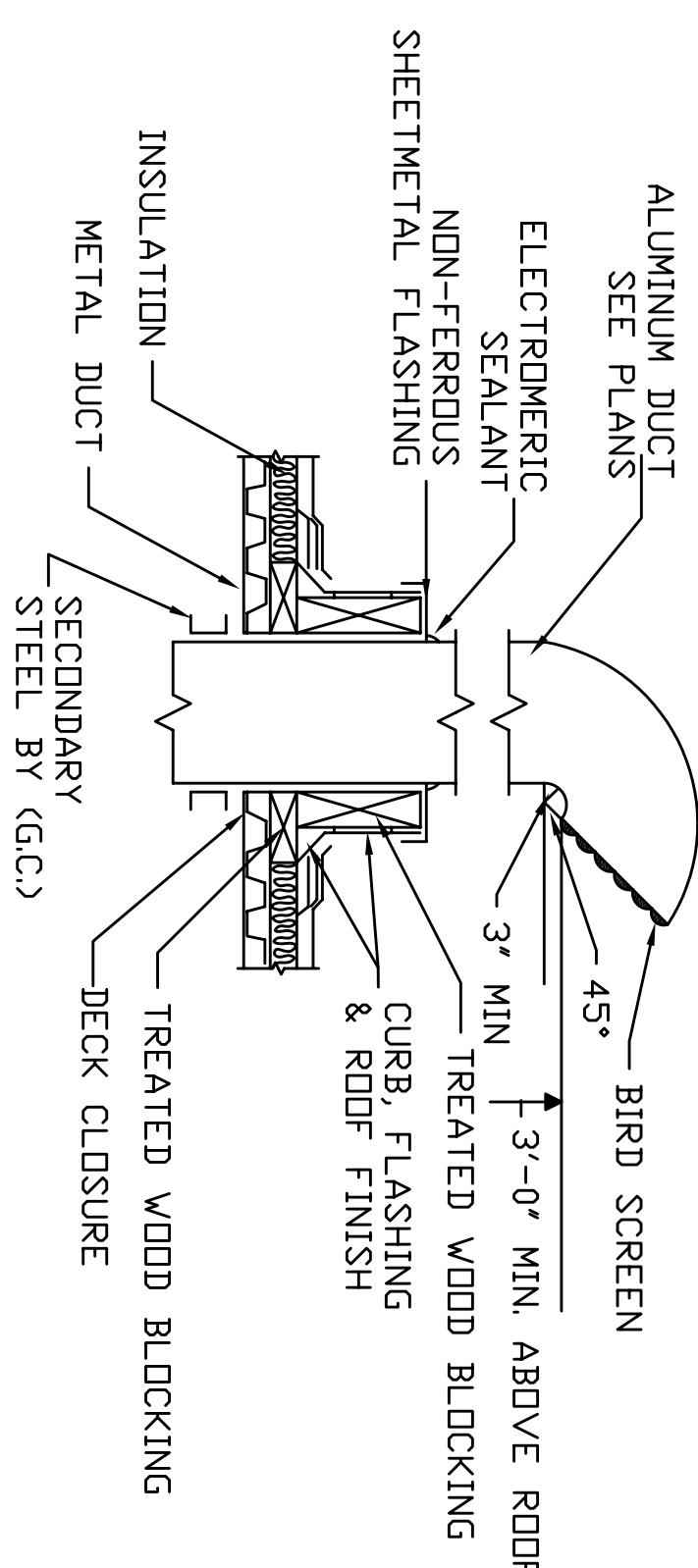
GAS FIRED ROOFTOP AIR CONDITIONING UNIT GAS PIPING DETAIL



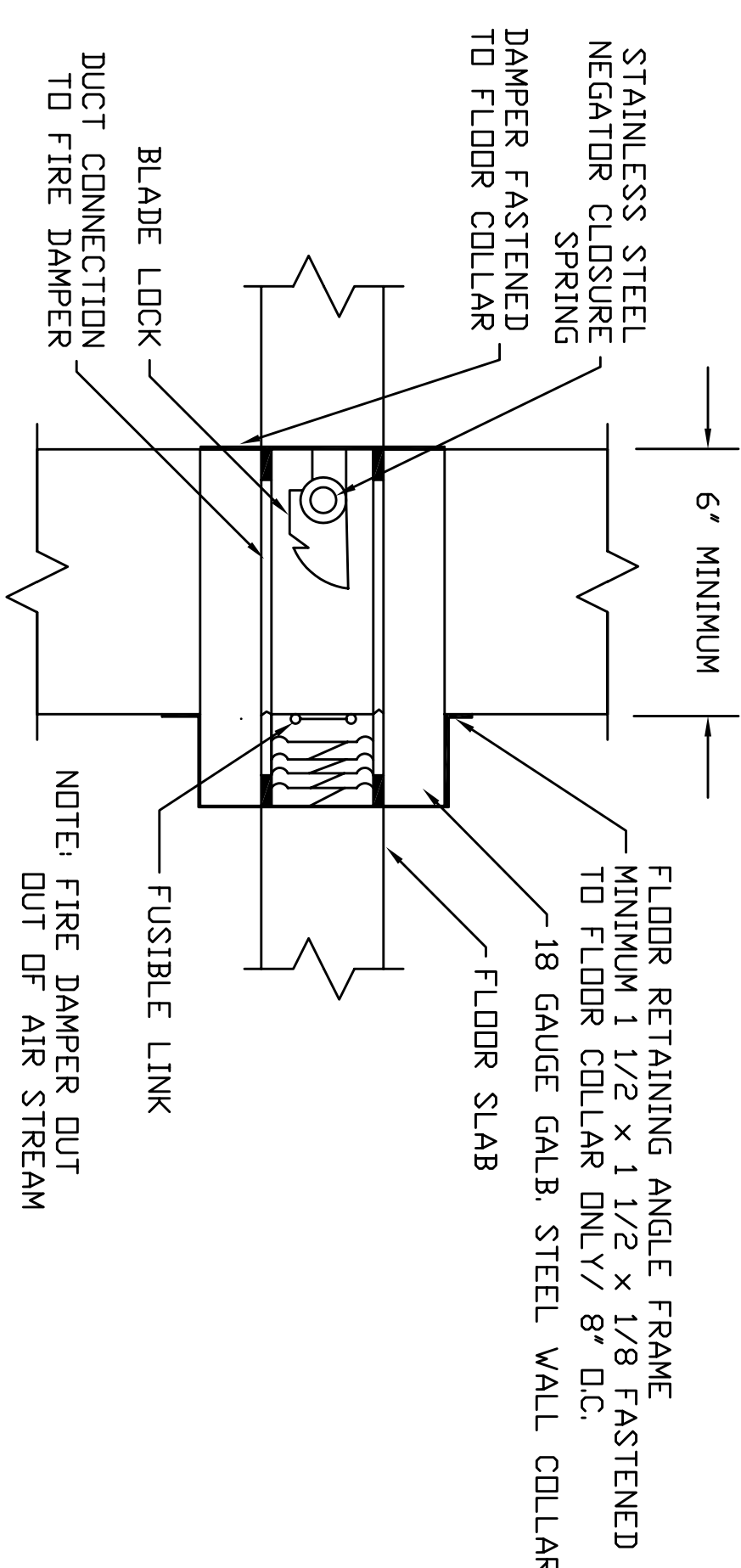
ATTACHMENT TO STEEL BEAM



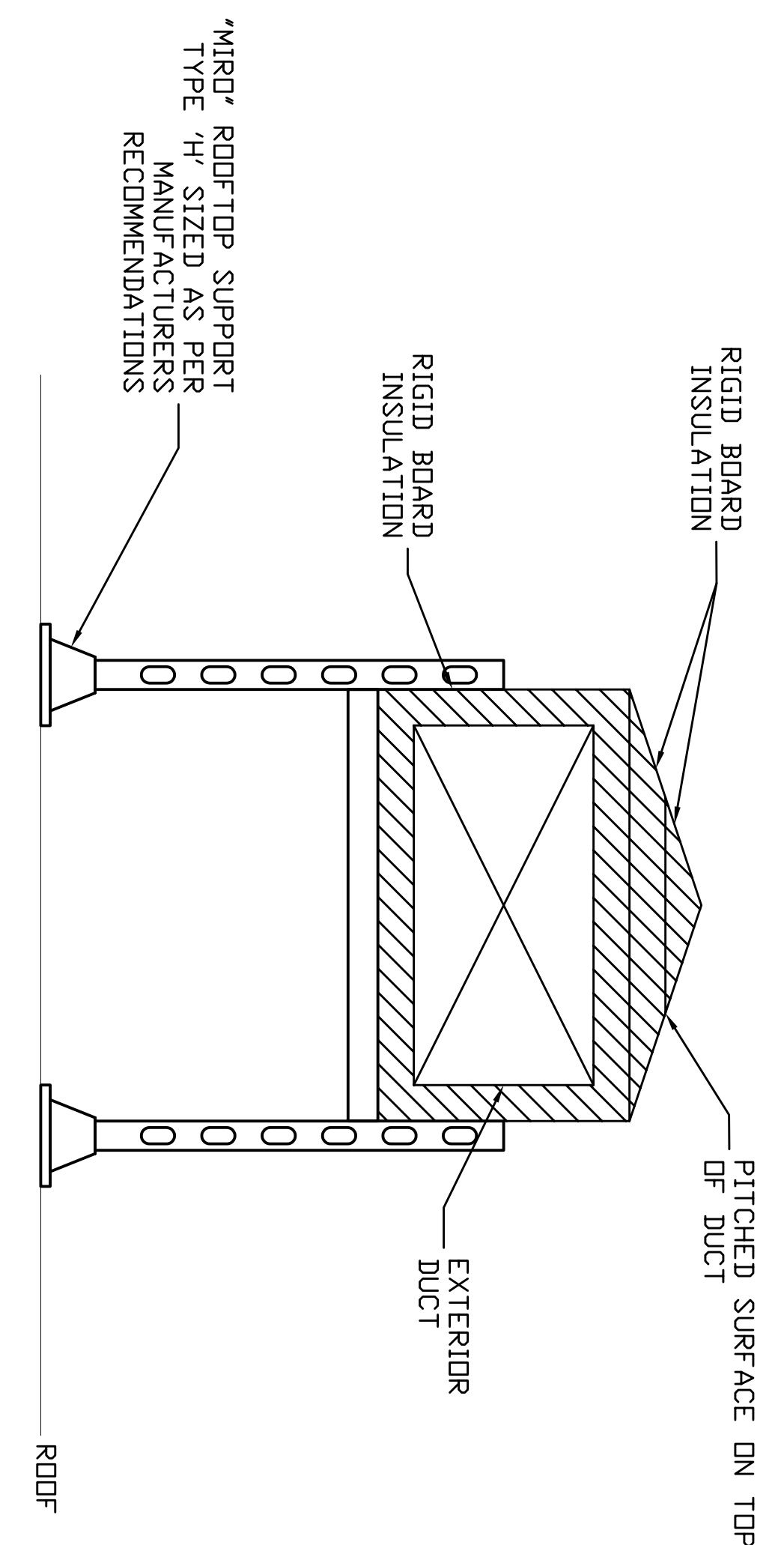
BRANCH VOLUME DAMPER DETAIL (TYPICAL FOR ALL BRANCH DUCTS)



DUCT PENETRATION THROUGH ROOF AND GOOSENECK DETAIL



HORIZONTAL FIRE DAMPER DETAIL



OUTDOOR DUCT INSULATION & SUPPORT DETAIL

JOB#: 9039
DATE: 1/16/07
SCALE: 1/4"

DRAWING NUMBER
H-3

OCEAN MEDICAL PROPERTIES
3 NORTH MAIN STREET
FREEPORT, NY 11520

DRAWING: HVAC DETAILS

REV #	DATE	NOTE	BY
4/08/10		GENERAL REVISIONS	TET

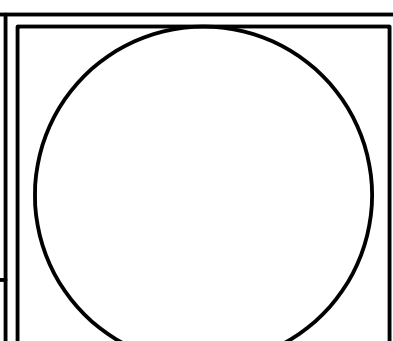
THE DRAWINGS, SPECIFICATIONS AND OTHER DOCUMENTS PREPARED BY THE ARCHITECT FOR THIS PROJECT ARE THE INSTRUMENTS OF THE ARCHITECT'S SERVICES FOR USE SOLELY WITH RESPECT TO THIS PROJECT AND, UNLESS OTHERWISE PROVIDED, THE ARCHITECT SHALL BE DEEMED THE AUTHOR OF THESE DOCUMENTS AND SHALL RETAIN ALL COMMON LAW, STATUTORY AND OTHER RESERVED RIGHTS INCLUDING COPYRIGHT. THE OWNER SHALL BE PERMITTED TO RETAIN COPIES OF THE ARCHITECT'S DRAWINGS, SPECIFICATIONS AND OTHER DOCUMENTS FOR THE PROJECT. THE ARCHITECT'S DRAWINGS SHALL NOT BE USED BY THE OWNER OR OTHERS ON OTHER PROJECTS, FOR ADDITIONS TO THIS PROJECT OR FOR COMPLETION OF THIS PROJECT BY OTHERS.

DRAWN BY: MAT

CHECKED BY: TET

CONSULTANTS:
Tengel Engineering Associates, P.C.
Consulting Engineers
205 Middle Country Road, Suite 208
Selden, NY 11784
Phone: 631-750-2800 Fax: 631-750-2744

NYS P.E. LIC # 66867



OCG ARCHITECTS
OCG ARCHITECTS, LLP
ARCHITECTURE+INTERIORS
60 CARLETON AVE
ISLIP TERRACE, NY 11752
TEL: 631-859-3488
FAX: 631-859-3489